



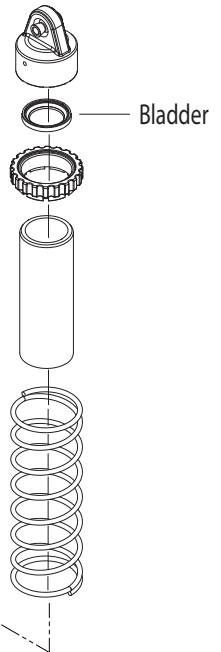
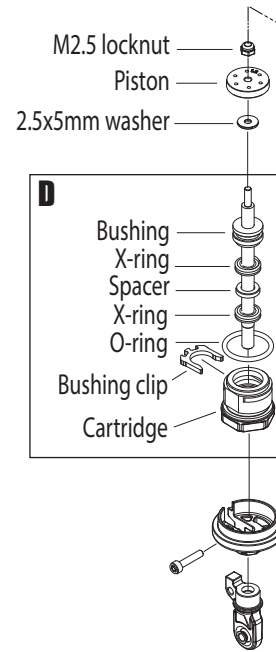
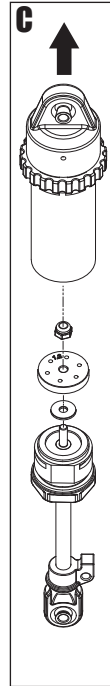
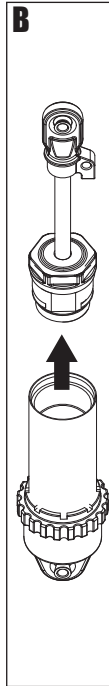
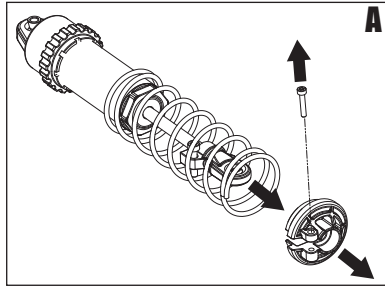
Visite la página TRAXXAS.com/manuals para descargar el instrucciones en su idioma.

Auf TRAXXAS.com/manuals können Sie anleitung in Ihrer Sprache downloaden.

GT-Maxx® Shock Rebuild Instructions

Covers Part #8962

1. Remove the 2.5x12mm CS from the lower spring retainer. Remove the lower spring retainer and shock spring (A).
2. Remove the cartridge/shock shaft/piston assembly from the shock body (B).
3. Remove the M2.5 locknut, piston, 2.5x5mm washer, and the existing cartridge assembly from the shock shaft (C).
4. Assemble the new cartridge on the shock shaft (D).



Note: The new cartridge must be assembled on the shock shaft. DO NOT attempt to assemble the cartridge separately and slide it onto the shaft. This may damage the shaft x-rings and cause a leak.

5. Reassemble in reverse order.

SHOCK PISTON SIZES

MODEL	FRONT	REAR
Maxx®	1.35mm	1.25mm
Sledge®	1.25mm	1.25mm

If you have questions or need technical assistance, call Traxxas at

1-888-TRAXXAS

(1-888-872-9927) (U.S. residents only)

TRAXXAS.COM

Traxxas, 6250 Traxxas Way, McKinney, TX 75070, Phone: 972-549-3000, Fax: 972-549-3011, e-mail: support@Traxxas.com

KC2739-R01 Rev 230504



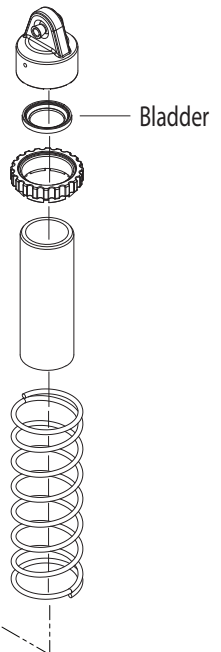
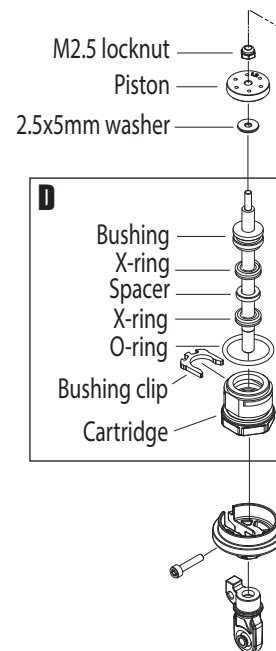
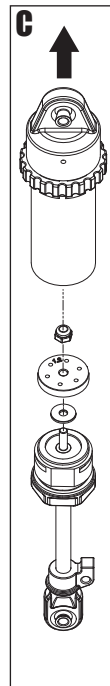
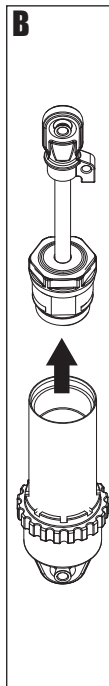
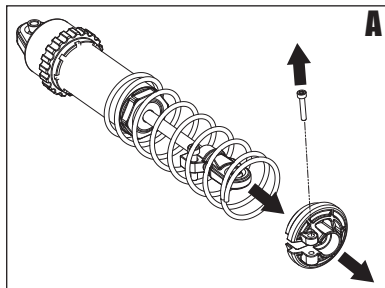
Visite la página TRAXXAS.com/manuals para descargar el instrucciones en su idioma.

Auf TRAXXAS.com/manuals können Sie anleitung in Ihrer Sprache downloaden.

GT-Maxx® Shock Rebuild Instructions

Covers Part #8962

1. Remove the 2.5x12mm CS from the lower spring retainer. Remove the lower spring retainer and shock spring (A).
2. Remove the cartridge/shock shaft/piston assembly from the shock body (B).
3. Remove the M2.5 locknut, piston, 2.5x5mm washer, and the existing cartridge assembly from the shock shaft (C).
4. Assemble the new cartridge on the shock shaft (D).



Note: The new cartridge must be assembled on the shock shaft. DO NOT attempt to assemble the cartridge separately and slide it onto the shaft. This may damage the shaft x-rings and cause a leak.

5. Reassemble in reverse order.

SHOCK PISTON SIZES

MODEL	FRONT	REAR
Maxx®	1.35mm	1.25mm
Sledge®	1.25mm	1.25mm

If you have questions or need technical assistance, call Traxxas at

1-888-TRAXXAS

(1-888-872-9927) (U.S. residents only)

TRAXXAS.COM

Traxxas, 6250 Traxxas Way, McKinney, TX 75070, Phone: 972-549-3000, Fax: 972-549-3011, e-mail: support@Traxxas.com

KC2739-R01 Rev 230504